

## EXHIBIT LIST

Reference No: AP4/00080

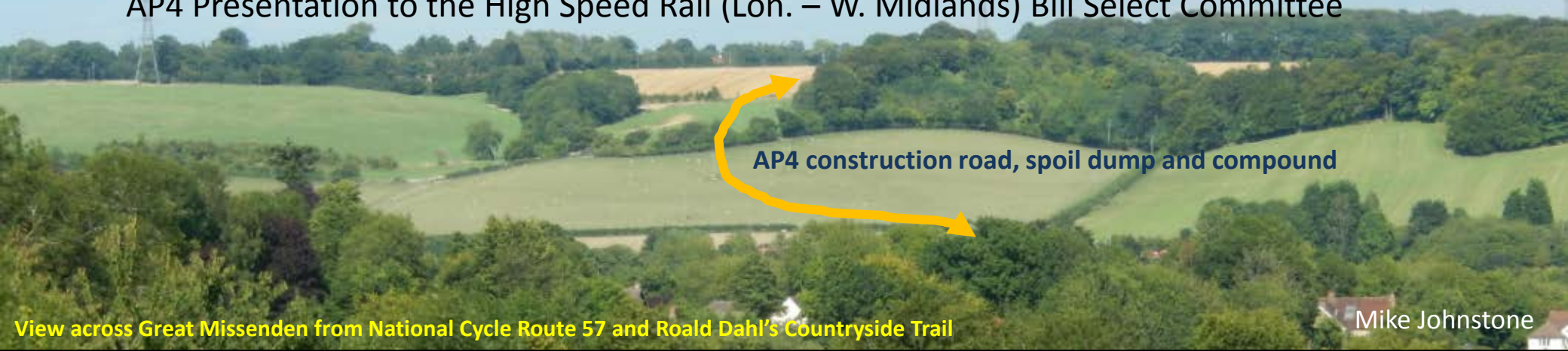
Petitioner: Great Missenden Parish Council

Published to Collaboration Area: Thursday 14-Jan-2016

Page 1 of 30

No	Exhibit Name	Page
1	<a href="#">A1935 Presentation (A1935)</a>	2 - 24
2	<a href="#">A1936 Exhibits (A1936)</a>	25 - 30

**Great Missenden Parish Council & Great Missenden CE Combined School**  
**AP4 Presentation to the High Speed Rail (Lon. – W. Midlands) Bill Select Committee**



**Petition AP4: 080**

Presented by: James Burton  
Witnesses: Anne Hewett - chairman - Great Missenden ward  
Dr Jim Conboy – Data Analyst

**Petition AP4: 177 - The Governing Body of Great Missenden CE Combined School**  
Rozalyn Thomson - Head Teacher, Church of England Combined School



# Summary of Current Asks

## **A longer bored Chiltern tunnel**

- 1a T-Bow (Tunnel Bored One Way) to the north of Wendover to the edge of the Chilterns AONB (7km)

*If necessary, with cost-benefit analysis informed by the landscape valuation methodology developed by eftec, recognised by the DfT.*

- if not* 1b An extra mile (1.5km) to Leather Lane - major benefits at little cost

- if not* 2a) Move the AP4 temporary haul road north, nearer to Hunts Green

- 2b) A number of other mitigations (see over)

## Summary of Current Asks - continued

### 2b) A number of other mitigations most of which flow from AP4:-

- i. North portal of Chiltern Tunnel- to reduce noise during operation and noise and dust during construction :
  - Retained sides to cuttings which also reduces the footprint size and length of footpath over-bridge
  - slower trains - deeper retained cuttings – taller noise barriers next to line & on both sides at portal end
- ii. Landscape: to reduce the adverse visual impact where possible:
  - Fully landscape the area around the Chesham road vent shaft and the north portal
  - More green bridges ie for Leather Lane, Bowood Lane and Rocky Lane
  - Bury the 400kV power lines being moved near the portal, ideally one additional tower not taller
- iii. Traffic Assessment: A413/A355 from Nash Lee to the M40 and scheme to remove spoil from Hunts Green
- iv. Compensation: Improve the NTS for those who are trapped by the placement of the line in their area

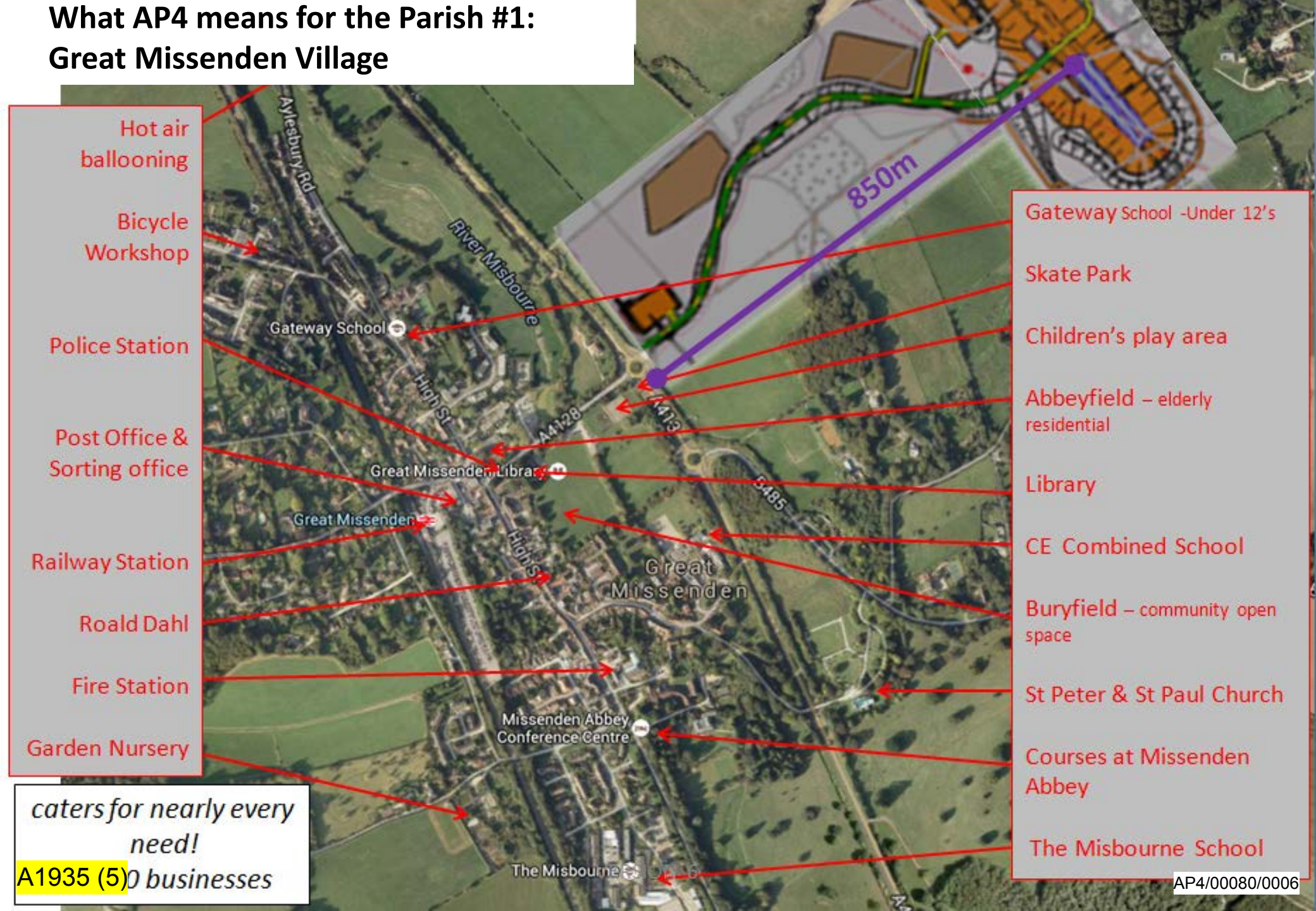
# AP4 – What's New/Changed?

## Bringing new adverse effects...

- Extension to the Chilterns Tunnel
  - North Portal now at South Heath ....new
  - New Construction Haul road to A413 ....new
  - A realignment of the Overhead Electricity Line and Pylons ....changed
  - New Vent Shaft on B485 Chesham Road .... new
- Extended Traffic assessment
  - Many junctions predicted to be loaded beyond capacity .... incomplete
  - Removal of spoil from “(un)sustainable placement area” at Hunts Green .... changed



# What AP4 means for the Parish #1: Great Missenden Village



Hot air  
ballooning

Bicycle  
Workshop

Police Station

Post Office &  
Sorting office

Railway Station

Road Dahl

Fire Station

Garden Nursery

*caters for nearly every  
need!*

**A1935 (5)** businesses

Gateway School -Under 12's

Skate Park

Children's play area

Abbeyfield – elderly  
residential

Library

CE Combined School

Buryfield – community open  
space

St Peter & St Paul Church

Courses at Missenden  
Abbey

The Misbourne School



## What AP4 means for the Parish #2:

Proximity to the exit at the north portal and the line on the surface

### 90 homes

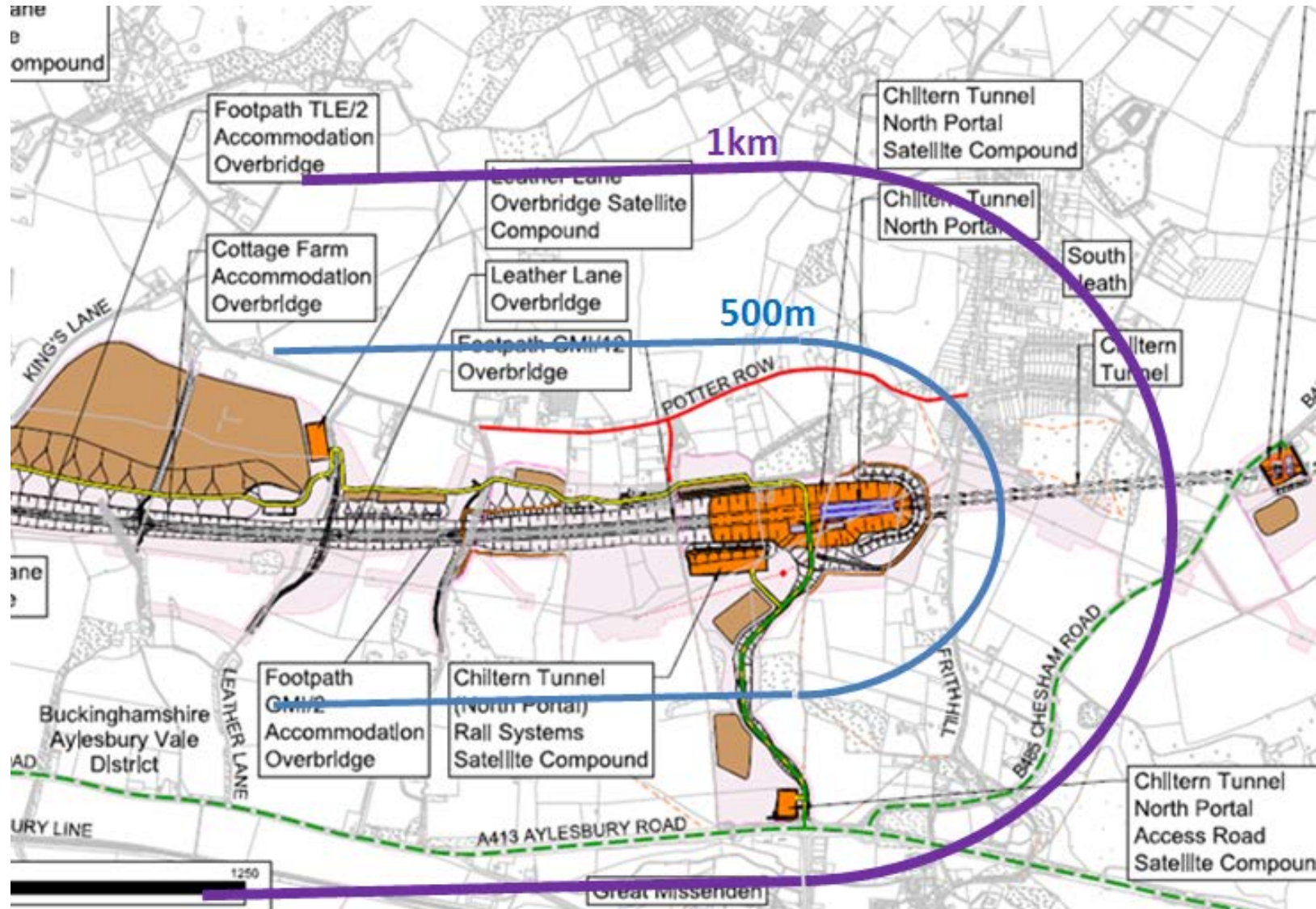
- within 500m
- noise plus dust
- operation and construction

### 156 homes

- exceeds night-time LOAEL (60dBmax at the façade)

### 265 homes

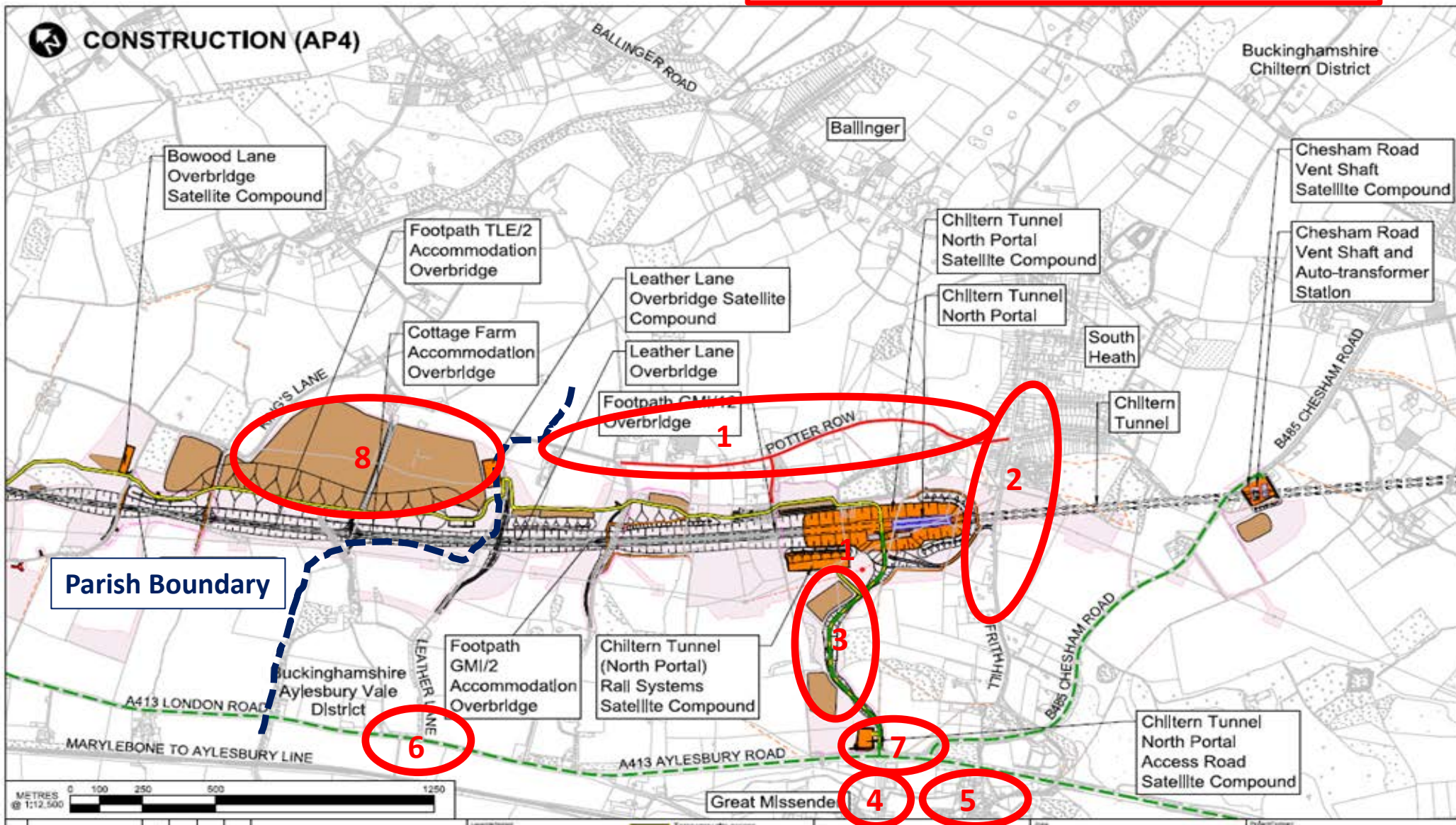
- within 1 km
- owners trapped by dysfunctional housing market





# An overview of construction work in AP4

Areas of particular concern to parishioners



1-Potter Row; 2-South Heath; 3-Construction Road; 4-Skate Park & playground; 5-C of E School;

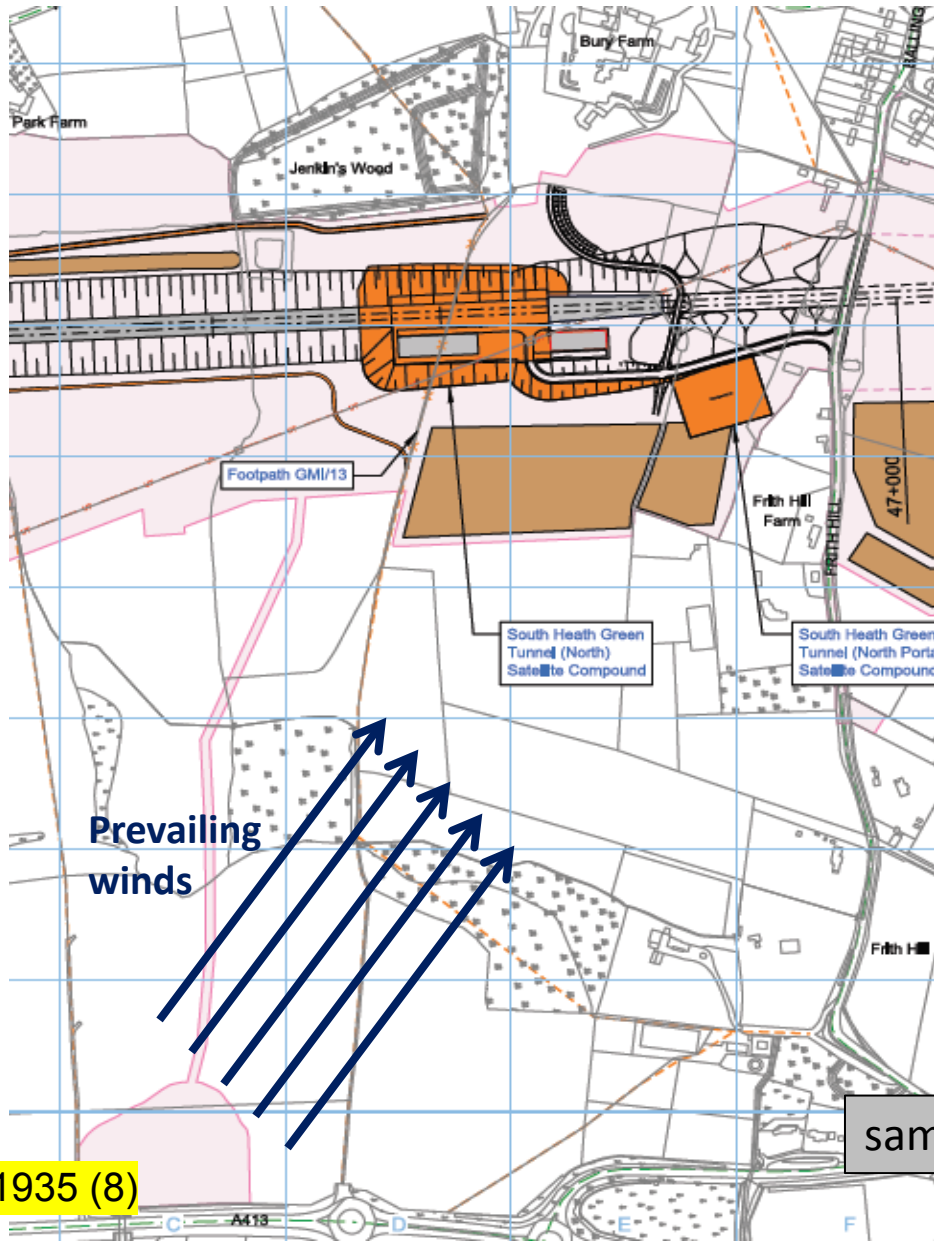
6-7-Sensitive junctions, Leather Lane and the GM roundabouts; 8-temporary spoil dump at Hunts Green





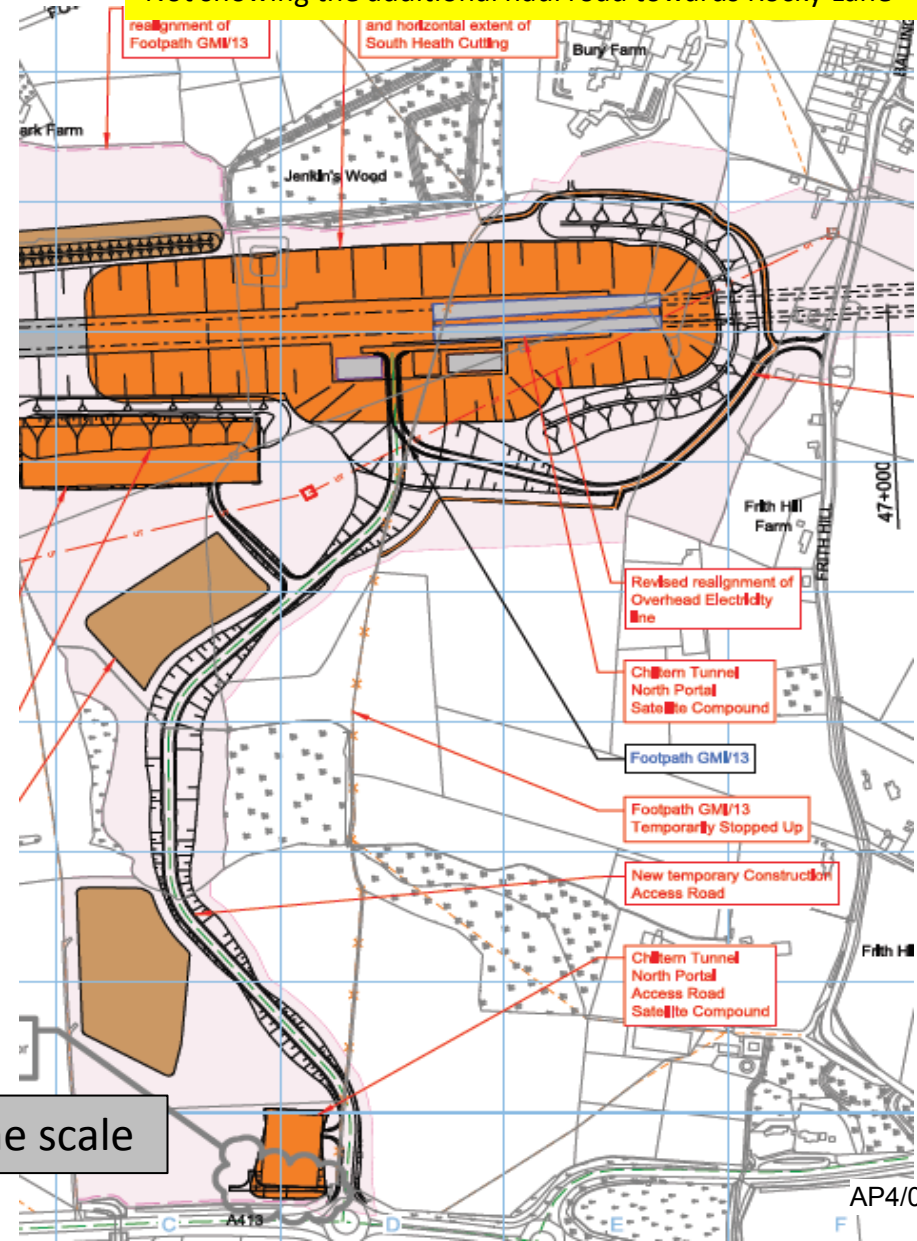
## North Portal Construction - AP4 v AP2

AP2

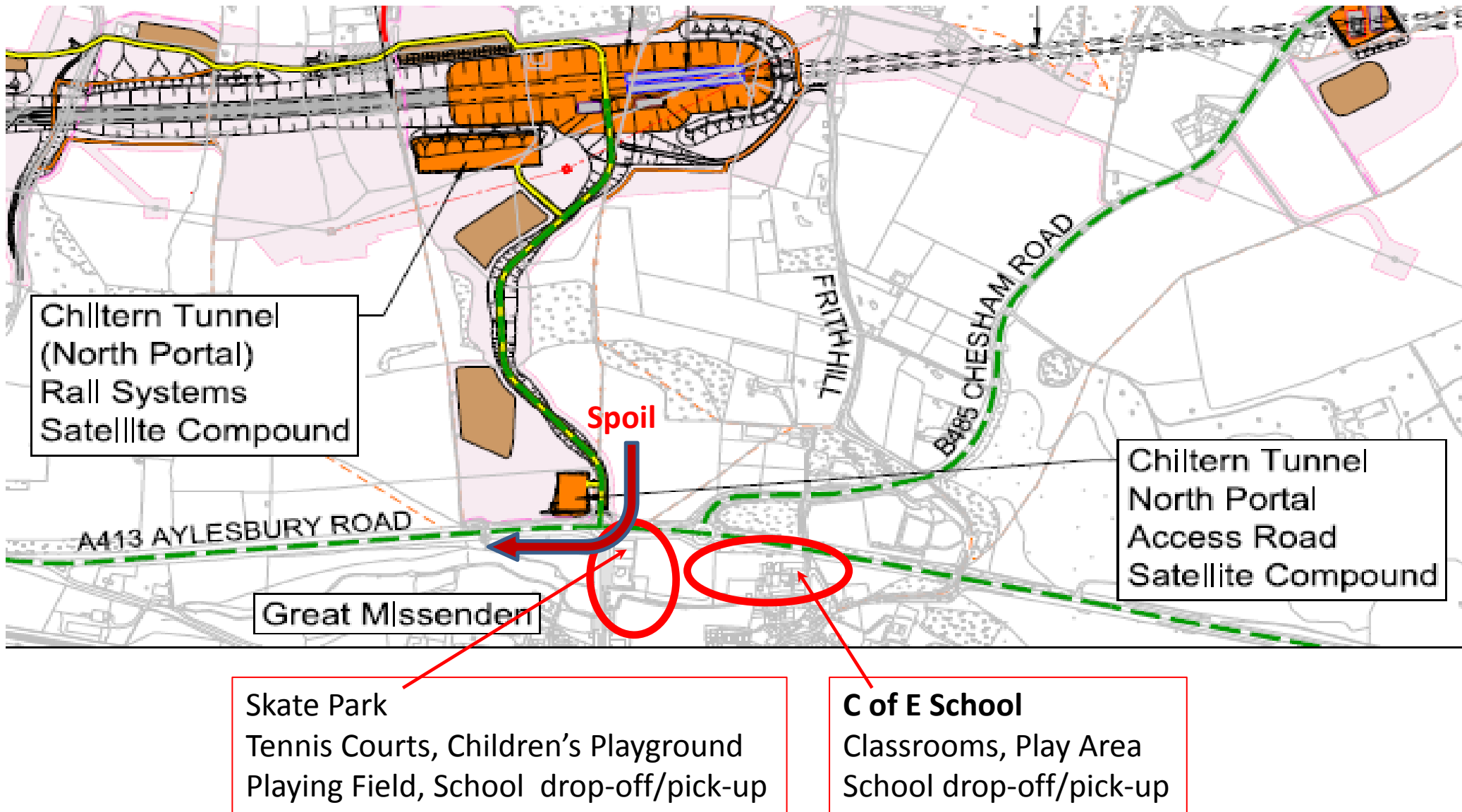


AP4 – Larger footprint of north portal, bigger compound, new pylons

Not showing the additional haul road towards Rocky Lane



**AP4: HAUL ROAD:** 'Major Significant Adverse effect on traffic at Link Road junction with the A413'



**Risk Assessment :** close Skate Park, Tennis Courts and Children's Playground during 7 years of construction

# Great Missenden C of E Combined School

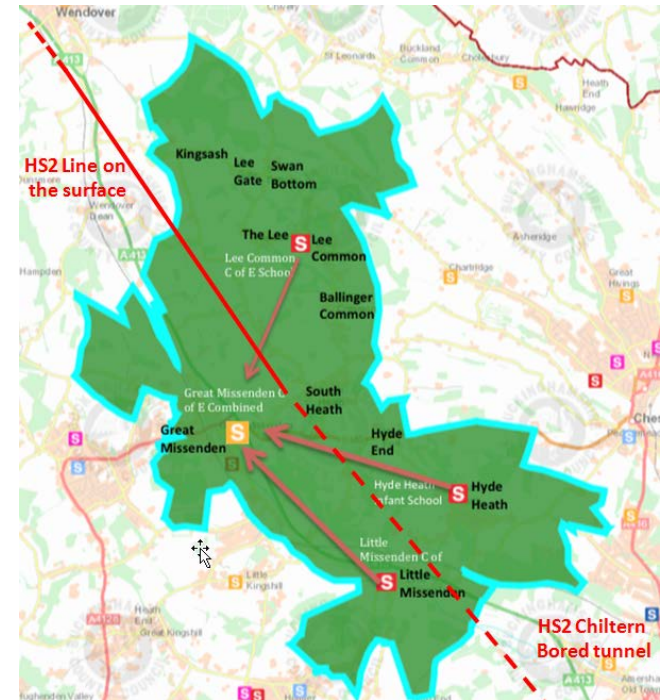


Our locus standi has not been challenged because...

- The exit to the short tunnel extension is in **the worst place possible** – directly above our school.
- HS2's response to our petition **does not address our concerns**.
- HS2's assertion that there will be **no educational impact** is **patently false**. Our exceptional and award-winning outdoor education curriculum will be **significantly compromised** by AP4.

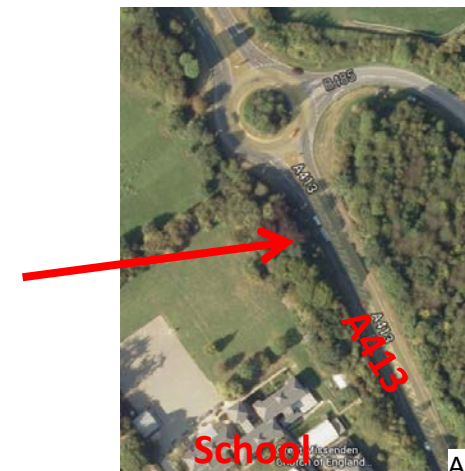
**The impact of AP4 will be in 5 key areas:**

- 1. Pedestrian access and safety**
- 2. Forced closure of the outdoor learning area (below)**
- 3. Traffic gridlock requiring a solution**
- 4. Severance of school's cross country route**
- 5. Noise and pollution from larger portal, closer to school**



This “Forest School” outdoor learning area is directly adjacent to the A413. The HS2 spoil trucks will be passing within **5 metres** of these children.

The school would have to close this area during the construction phase. There is no other suitable wooded area on the school site.





# We do not agree with the Promoter's Response



The impact of AP4 on our school will be long term and damaging

AP4 with the haul road onto the A413 will make access to the school, already a serious cause for concern, significantly worse. Traffic gridlock (see pictures) and inadequate pedestrian access to the school are a daily hazard.

**HS2 seeks to leave it to Bucks County Council and the local community to produce a solution, but....**

The 'solution' – a filter lane off the A413 and a drop-off area within school grounds – will be costly and will force the school to sacrifice a large section of its playing field.



Narrow and dangerous access to school for over 400 children – a few metres from the haul road exit / A413 roundabout

**The Governors of Great Missenden School represent over 1,200 pupils, staff and parents.**

**We strongly object to AP4.**

**We ask HS2 to take full responsibility for its unwelcome consequences.**

**To safeguard the future of our school and our community, we again ask for an extension of the tunnel to the edge of the AONB.**



Existing traffic gridlock every morning and afternoon

# AP4 traffic assessment

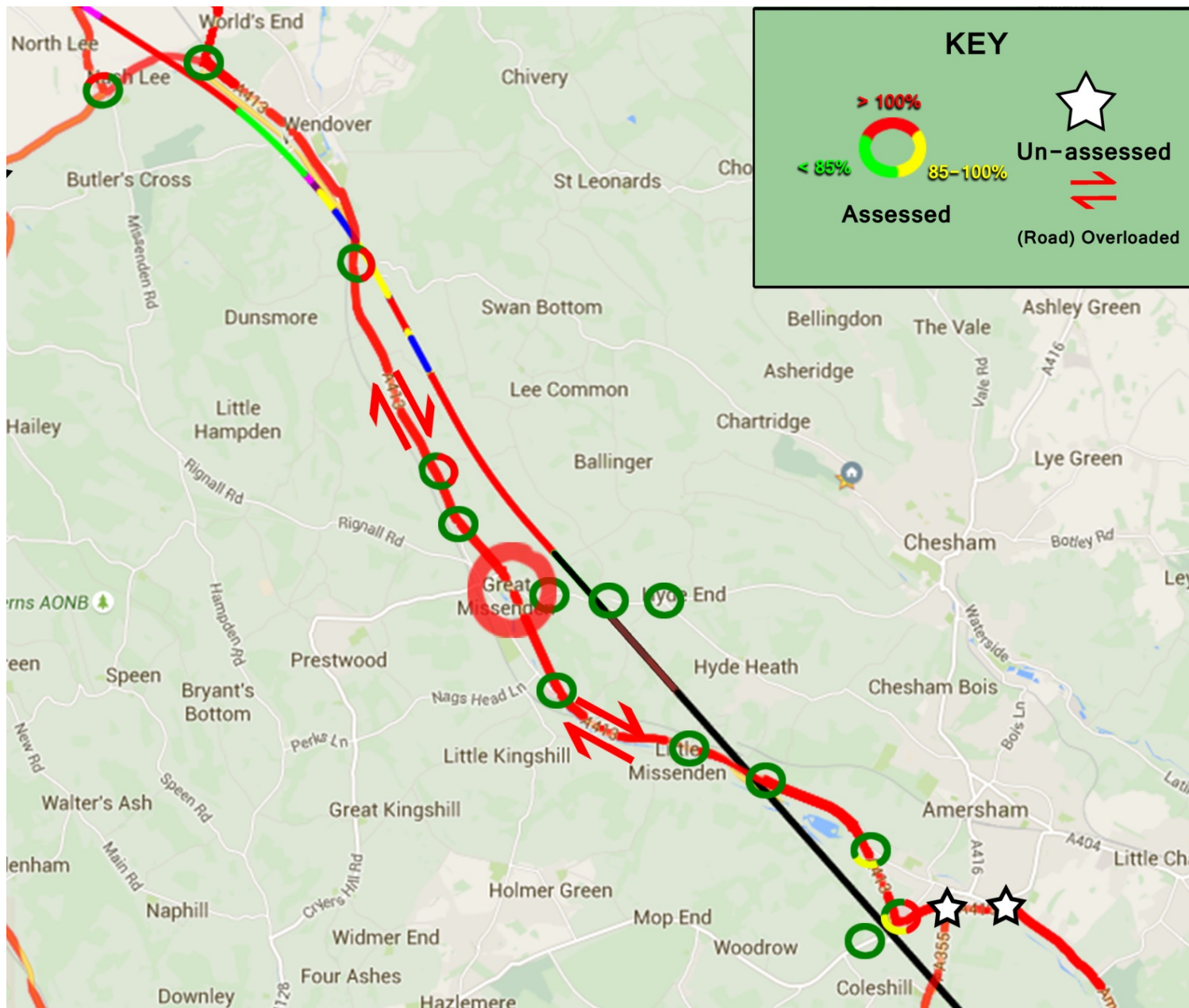
A413 – Junctions assessed	CFA8	CFA9	CFA10
2013 ES	0	2	2
SES3	6	13	4
Over 100%	1	5	2

➤ Many more junctions have been assessed, now showing excessive road traffic load during construction, particularly around Great Missenden

A413 peak flows, 2021 + HS2	South of Gt Missenden		North of Gt Missenden	
	AM, S/b	PM, N/b	AM, S/b	PM, N/b
2013 ES	95%	98%	105%	110%
SES3	111%	99%	96%	87%

➤ Traffic flow (as % of road capacity) on the single carriageway sections are marginally better North of Gt Missenden, marginally worse to the South – no significant improvement.

# A413 traffic and Junctions





# Gt. Missenden Roundabouts

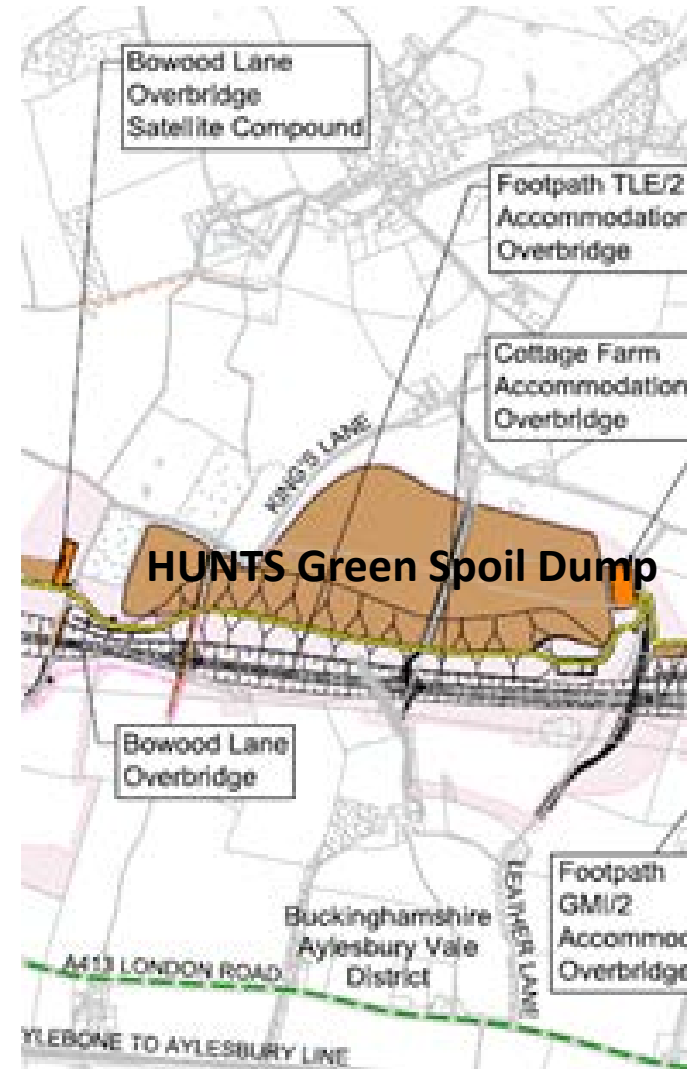
<b>B485 Frith Hill</b>	<b>2021 with HS2 construction traffic, AM</b>			<b>2021 with HS2 construction traffic, PM</b>		
Approach (from)	Flow (All PCU)	Flow/ capacity %	Max queue	Flow (all PCU)	Flow/ capacity %	Max queue
B485 Frith Hill	654	135%	97	666	109%	24
A413 (S) London Road	947	108%	53	1129	93%	11
A413 (N) London Road	1831	89%	7	1153	85%	5

<b>A4128 Link Road</b>	<b>2021 with HS2 construction traffic, AM</b>			<b>2021 with HS2 construction traffic, PM</b>		
Approach (from)	Flow (All PCU)	Flow/ capacity %	Max queue	Flow (all PCU)	Flow/ capacity %	Max queue
A413 (S) Missenden Bypass	1229	61%	2	1500	73%	3
A4128 Link Road	683	128%	87	540	126%	46
A413 (N) Missenden Bypass	1268	117%	97	805	121%	65
<b>New haul road</b>	47	9%	0	95	11%	1

➤ SES3 tables (7-51,52) now show substantial problems on A4128, B485 and the A413 approaching these roundabouts

# Hunts Green Spoil

- AP2 reported Rocky Lane/A413 junction operating beyond capacity, but no junction assessment
- Exhibit K (P7595) shows a peak flow of 300-450 HGVs/day for Rocky Lane
- Under AP4, 50% of Hunts Green Spoil is returned back down the trace (behind Potter Row homes) to join the A413 at the new haul road.
- In both cases, the HGVs must turn right at the A413 to proceed Northwards to Nash Lee.
- It is not clear that this is compatible with maintaining the flow of traffic on the A413



# Traffic - asks

- Repositioning the construction haul road junction with the A413 nearer to Hunts Green, to reduce impact on the A4128 link road traffic (the Skate Park, School and the village centre)
- A unified assessment of traffic on the A413/A355 from Nash Lee to the M40, and proposals to mitigate impacts during the construction phase.
- A public consultation on the proposed mitigation.
- A full report on the promoters scheme to remove spoil from the Hunts Green dump – timescales, traffic flows, destination etc.



**AP4 Haul Road – other concerns including those covered by John Gover - archaeologist**

**New viewpoints assessed in AP4 SES**

**Elmtree Green**  
**Gateway school**

Gateway School

**Bury Field House**  
Viewpoint AP4.091.2.003  
**Moderately significant adverse effect**

**Skate Park, Playground**  
Viewpoint AP4.091.7.004  
**No significant adverse affect!**

*Quote from HS2 SES3 and AP4 ES Appendix LV-001-009:*

**A1935 (17) It was not possible to take a photograph representing these viewpoints.**

Mike  
Johnstone

AP4/00080/0018



## LANDSCAPE: affected viewpoints arising from AP4

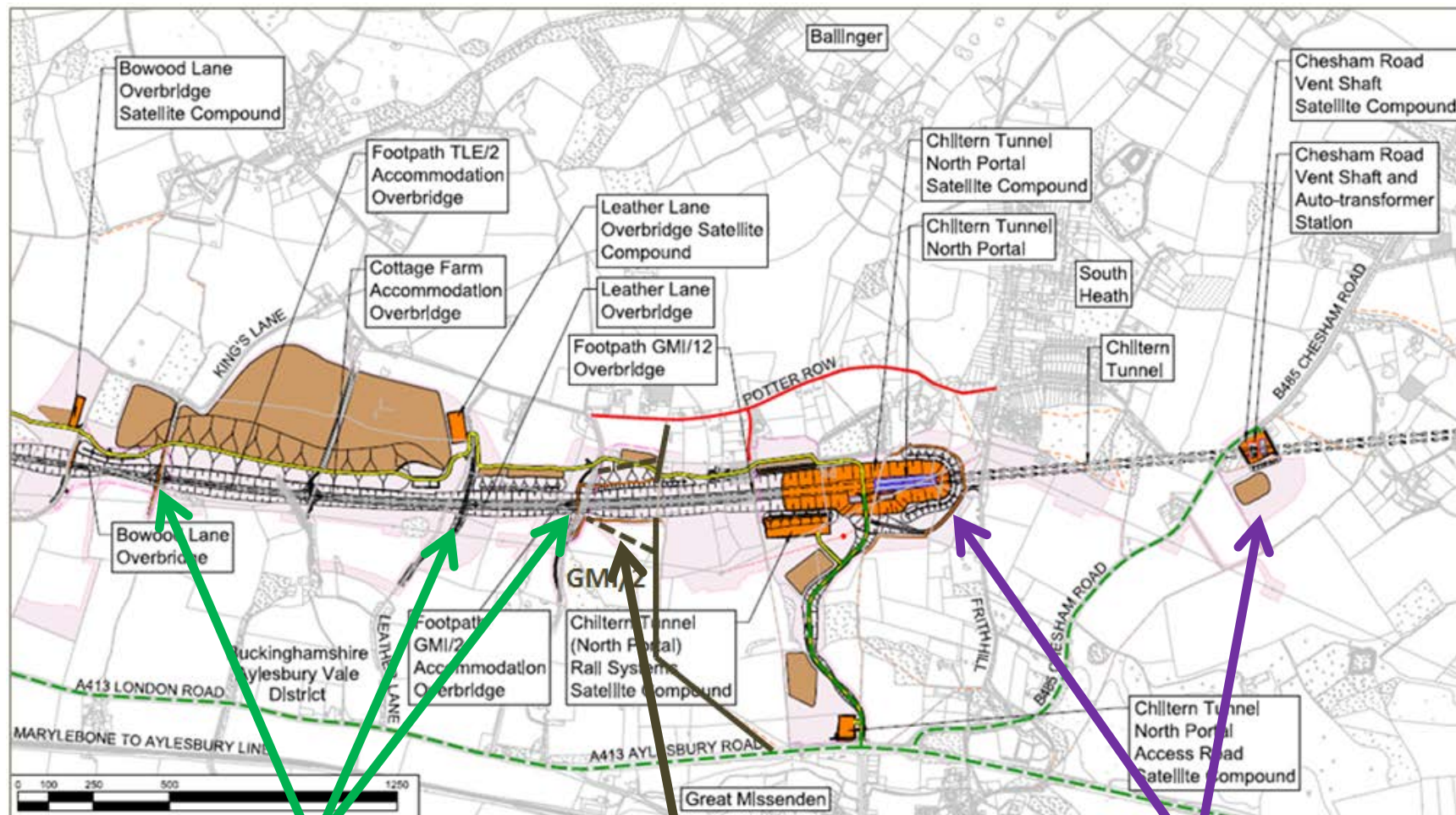
**Viewpoints** recent photos with overlays of the position of the haul road, spoil dump and construction compound



View from Children's play area across the Skate Park  
A1935 (18)



## Landscape - other asks



Green Bridges instead of overbridges at Bowood Lane, Leather Lane and Liberty Lane

Alter the diversion of GMI/2 footpath under **AP4-009-002** to reduce time walking along the noisy line

Sympathetic landscaping and placement of noise barriers as close as possible to the noise source

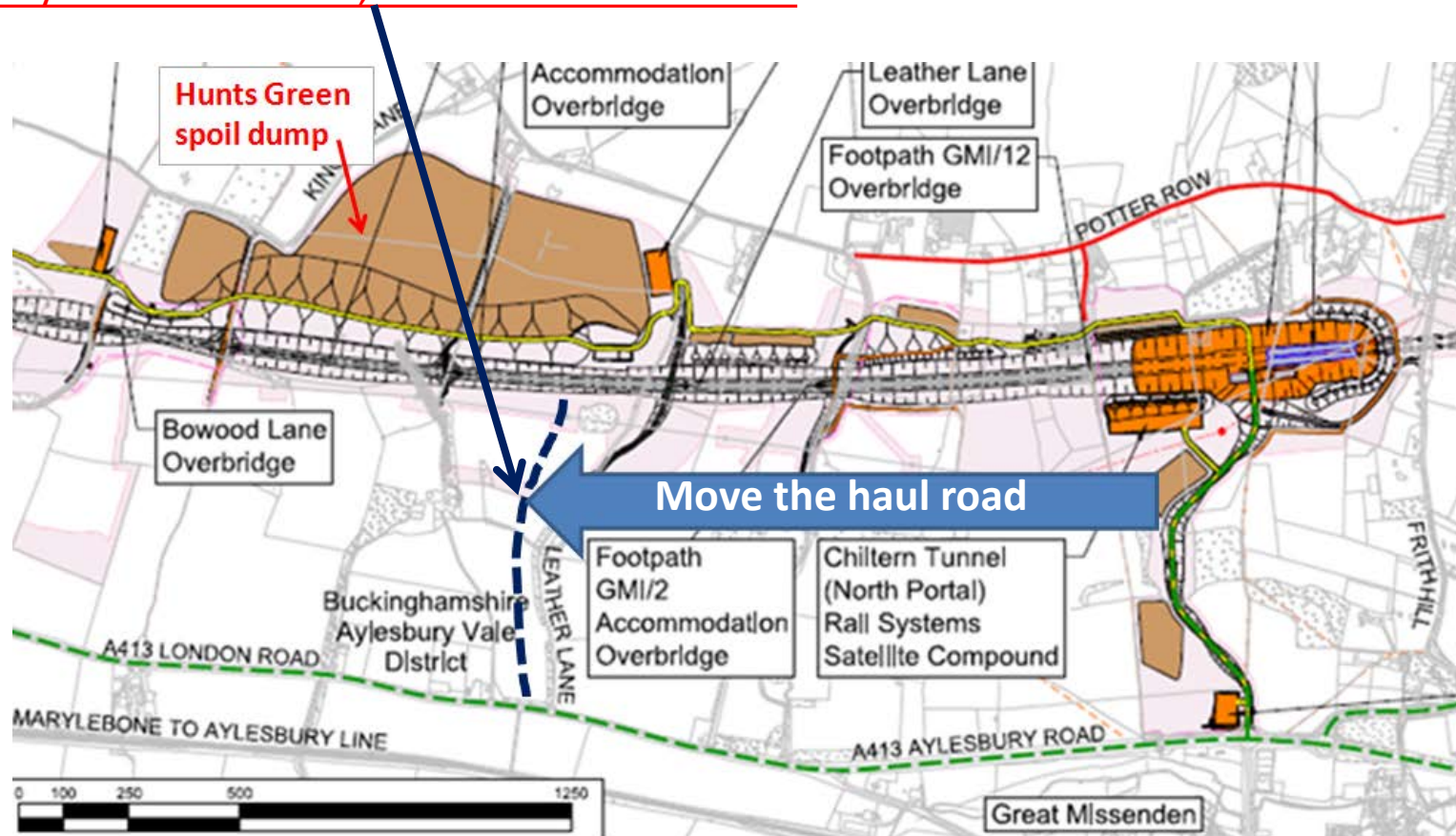
## Great Missenden Parish Council ASKS on the construction haul road

Firstly an extension to the chiltern bored tunnel, in the alternative:

Move the temporary haul road north, nearer to Hunts Green

Benefits of moving the haul road :

- Shorter/quicker access to temporary spoil dump
- Removes hazard from Skatepark play area and school
- Less traffic congestion at the link road junction and GM area
- Less affect visually on the GM village
- Less impact on homes in Frith Hill SHL, Potter Row and stables



-Bucks CC support

- Saves most of Leather Lane - a traditional Chilterns chalk lane

-Land needs to be safeguarded now



# Summary of Current Asks

## **A longer bored Chiltern tunnel**

- 1a T-Bow (Tunnel Bored One Way) to the north of Wendover to the edge of the Chilterns AONB (7km)

*If necessary, with cost-benefit analysis informed by the landscape valuation methodology developed by eftec, recognised by the DfT.*

- if not* 1b An extra mile (1.5km) to Leather Lane - major benefits at little cost

- if not* 2a) Move the AP4 temporary haul road north, nearer to Hunts Green

- 2b) A number of other mitigations (see over)

## Summary of Current Asks - continued

### 2b) A number of other mitigations most of which flow from AP4:-

- i. North portal of Chiltern Tunnel- to reduce noise during operation and noise and dust during construction :
  - Retained sides to cuttings which also reduces the footprint size and length of footpath over-bridge
  - slower trains - deeper retained cuttings – taller noise barriers next to line & on both sides at portal end
- ii. Landscape: to reduce the adverse visual impact where possible:
  - Fully landscape the area around the Chesham road vent shaft and the north portal
  - More green bridges ie for Leather Lane, Bowood Lane and Rocky Lane
  - Bury the 400kV power lines being moved near the portal, ideally one additional tower not taller
- iii. Traffic Assessment: A413/A355 from Nash Lee to the M40 and scheme to remove spoil from Hunts Green
- iv. Compensation: Improve the NTS for those who are trapped by the placement of the line in their area

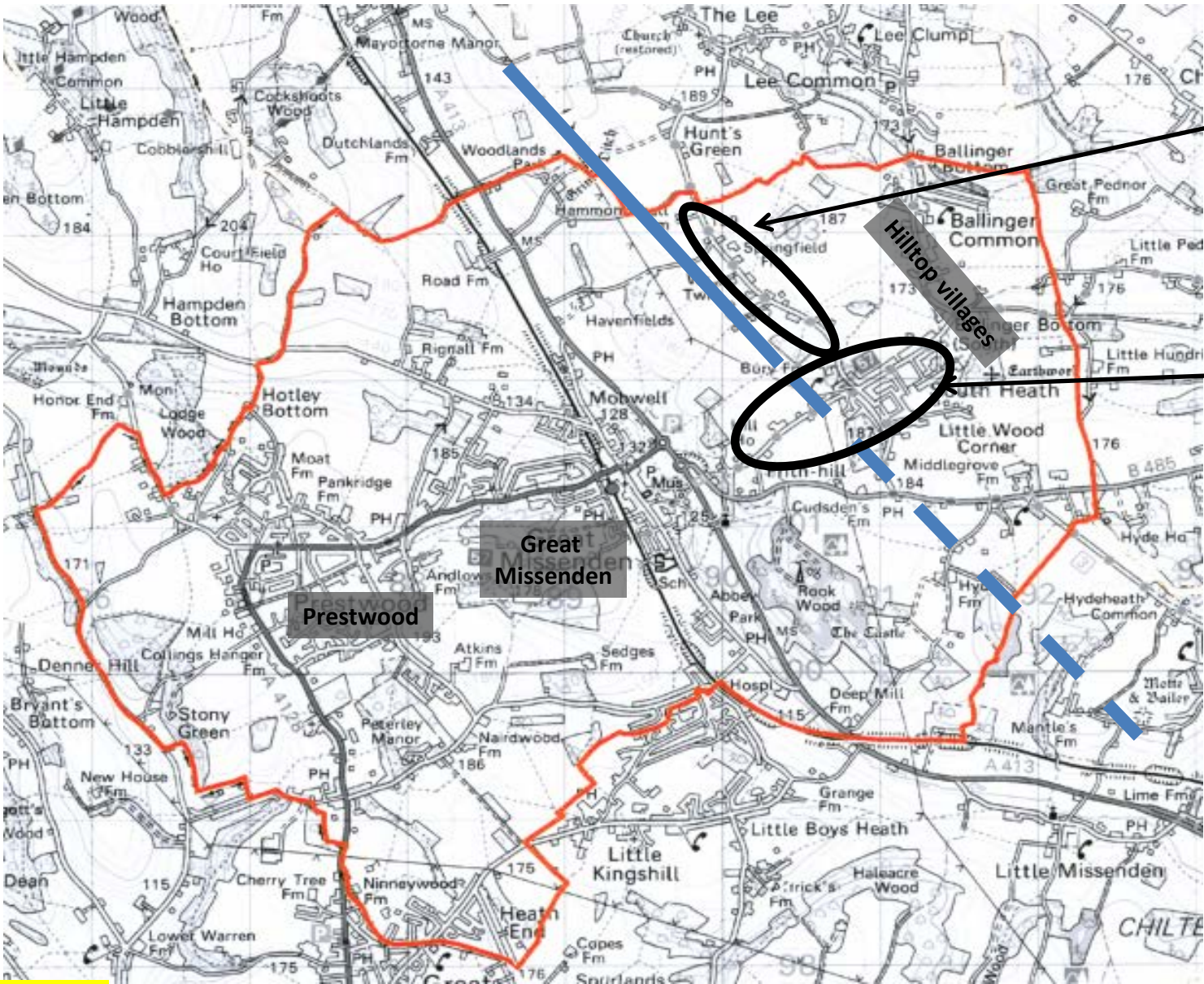




# Great Missenden Parish

Population of the parish: around 13,000

EXHIBIT A



**Potter Row**  
41 homes

**South Heath**  
285 homes

A1936 (1)

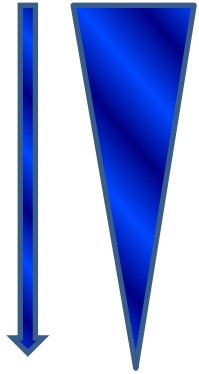
The whole of the parish is within the AONB



## Great Missenden Parish Council's Asks on 21<sup>st</sup> September 2015

top priority

### 'A longer bored chiltern tunnel'



- 1) To the north of Wendover to the edge of the chilterns AONB  
so 'edge to edge' (7km)  
if not
- 2) An extra mile (1.5km) to Leather Lane  
if not
- 3) Numerous individual mitigations

#### Why the long tunnel to Wendover?

- avoids two large unsightly viaducts
- preserves fourteen footpaths
- saves an ancient woodland and Grim's Ditch
- less agricultural land lost
- saves all the communities from South Heath to Wendover Dean, Dunsmore and Wendover from **blight**, **noise** and dust both operational and during construction
- avoids reputational damage to the AONB and the consequences on local businesses and tourism



#### Why the extra mile?

- saves parishioners in Potter Row, South Heath and Great Missenden directly affected from **blight**, **noise** and dust
- avoids severe traffic congestion on the A413 around the Link Road roundabout during construction and consequential rural rat-runs

A1936 (2) serves three footpaths

# EXHIBIT C1

**Organisation name: Great Missenden Parish Council**  
**Facility – Buryfield, Skate Park. To take account of impact of HS2.**

**Date of risk assessment: 04.01.16**

What are the hazards?	Who might be harmed and how?	What are you already doing?	Do you need to do anything else to control this risk?	Action by who?	Action by when?	Done
Construction traffic e.g. HGV's, (up to 300 a day at the peak for up to 7 years) using temporary haul road to join A413 at Link Road roundabout being out of control due to gradient of hill.	Children, young adults and parents using the Skate Park by out of control vehicles.	This haul road does not currently exist	Potentially close temporarily or relocate this facility if the haul road is built. Final decision to be taken by parish council nearer the time.	Parish Council	Before the haul road is in use	TBC
Dust from construction and vehicles	Children, young adults and parents using the Skate Park – especially those with respiratory problems.	This haul road does not currently exist	Potentially close temporarily or relocate this facility if the haul road is built. Final decision to be taken by parish council nearer the time.	Parish Council	Before the haul road is in use	TBC
Noise impact from construction and vehicles	Children, young adults and parents using the Skate Park suffering with noise disruption.	This haul road does not currently exist	Potentially close temporarily or relocate this facility if the haul road is built. Final decision to be taken by parish council nearer the time.	Parish Council	Before the haul road is in use	TBC
Flooding due to location of haul road	Children, young adults and parents using the Skate Park with the risk of flooding	This haul road does not currently exist	Potentially close temporarily or relocate this facility if the haul road is built. Final decision to be taken by parish council nearer the time.	Parish Council	Before the haul road is in use	TBC
Access to Skate Park in case of emergency due to additional traffic arising from the construction of HS2	Children, young adults and parents using the Skate Park might not be able to be reached so quickly in an emergency.	This haul road does not currently exist	Potentially close temporarily or relocate this facility if the haul road is built. Final decision to be taken by parish council nearer the time.	Parish Council	Before the haul road is in use	TBC

# EXHIBIT C2

**Organisation name: Great Missenden Parish Council**  
**Facility – Buryfield, Tennis courts. To take account of impact of HS2.**

**Date of risk assessment: 04.01.16**

What are the hazards?	Who might be harmed and how?	What are you already doing?	Do you need to do anything else to control this risk?	Action by who?	Action by when?	Done
Construction traffic e.g. HGV's, (up to 300 a day at the peak for up to 7 years) using temporary haul road to join A413 at Link Road roundabout being out of control due to gradient of hill.	Children, young adults and parents using the Skate Park by out of control vehicles.	This haul road does not currently exist	Potentially close temporarily this facility if the haul road is built. Final decision to be taken by parish council nearer the time.	Parish Council	Before the haul road is in use	TBC
Dust from construction and vehicles	Children, young adults and parents using the Skate Park – especially those with respiratory problems.	This haul road does not currently exist	Potentially close temporarily this facility if the haul road is built. Final decision to be taken by parish council nearer the time.	Parish Council	Before the haul road is in use	TBC
Noise impact from construction and vehicles	Children, young adults and parents using the Skate Park suffering with noise disruption.	This haul road does not currently exist	Potentially close temporarily this facility if the haul road is built. Final decision to be taken by parish council nearer the time.	Parish Council	Before the haul road is in use	TBC
Flooding due to location of haul road	Children, young adults and parents using the Skate Park with the risk of flooding	This haul road does not currently exist	Potentially close temporarily this facility if the haul road is built. Final decision to be taken by parish council nearer the time.	Parish Council	Before the haul road is in use	TBC
Access to Skate Park in case of emergency due to additional traffic arising from the construction of HS2	Children, young adults and parents using the Skate Park might not be able to be reached so quickly in an emergency.	This haul road does not currently exist	Potentially close temporarily this facility if the haul road is built. Final decision to be taken by parish council nearer the time.	Parish Council	Before the haul road is in use	TBC



# EXHIBIT C3

**Organisation name: Great Missenden Parish Council**

**Date of risk assessment: 04.01.16**

**Facility – Buryfield, Children's play area. To take account of impact of HS2.**

What are the hazards?	Who might be harmed and how?	What are you already doing?	Do you need to do anything else to control this risk?	Action by who?	Action by when?	Done
Construction traffic e.g. HGV's, (up to 300 a day at the peak for up to 7 years) using temporary haul road to join A413 at Link Road roundabout being out of control due to gradient of hill.	Children, young adults and parents using the Skate Park by out of control vehicles.	This haul road does not currently exist	Potentially close temporarily or relocate this facility if the haul road is built. Final decision to be taken by parish council nearer the time.	Parish Council	Before the haul road is in use	TBC
Dust from construction and vehicles	Children, young adults and parents using the Skate Park – especially those with respiratory problems.	This haul road does not currently exist	Potentially close temporarily or relocate this facility if the haul road is built. Final decision to be taken by parish council nearer the time.	Parish Council	Before the haul road is in use	TBC
Noise impact from construction and vehicles	Children, young adults and parents using the Skate Park suffering with noise disruption.	This haul road does not currently exist	Potentially close temporarily or relocate this facility if the haul road is built. Final decision to be taken by parish council nearer the time.	Parish Council	Before the haul road is in use	TBC
Flooding due to location of haul road	Children, young adults and parents using the Skate Park with the risk of flooding	This haul road does not currently exist	Potentially close temporarily or relocate this facility if the haul road is built. Final decision to be taken by parish council nearer the time.	Parish Council	Before the haul road is in use	TBC
Access to Skate Park in case of emergency due to additional traffic arising from the construction of HS2	Children, young adults and parents using the Skate Park might not be able to be reached so quickly in an emergency.	This haul road does not currently exist	Potentially close temporarily or relocate this facility if the haul road is built. Final decision to be taken by parish council nearer the time.	Parish Council	Before the haul road is in use	TBC

